



# Guides

from Playfair+

## The Problem With Plastic





# How to Use

This Guide from Playfair+ will walk you through some of the Tableau innovations designed and curated for use in the interactive workbook, [The Problem With Plastic](#).

[Explore our workbook: The Problem With Plastic](#) >

The true value of Guides from Playfair+ is the hand-selected array of resources produced by the award-winning Playfair Data experts at your disposal; tutorials, training videos, and template tools not only document the data visualizations and the engineering features that brought this dashboard design to life in Tableau, but offer a comprehensive "open-hood" look at some of the industry-leading techniques found in our visual analytics products.

Icon legend:

-  These icons indicate there is at least one blog post on the visualization.
-  These icons indicate there is at least one video on the visualization.

 **New to Tableau?**  
We recommend starting with our [Cornerstone Module](#).



© 2023 Playfair Data





## Global Features

### 01 Dashboard Navigation



Create an image-only navigation bar to navigate through the various views.

[Watch: How to Make a Navigation Bar with Buttons](#) >

### 02 Pop-Out Menu



Create a pop-out menu with additional information, such as a summary, resources, or a how-to-use guide.

[Read: How to Do Advanced Dynamic Zone Visibility](#) >

[Watch: How to Add a Show/Hide Button to a Layout Container](#) >

### 03 Light/Dark Mode Toggle



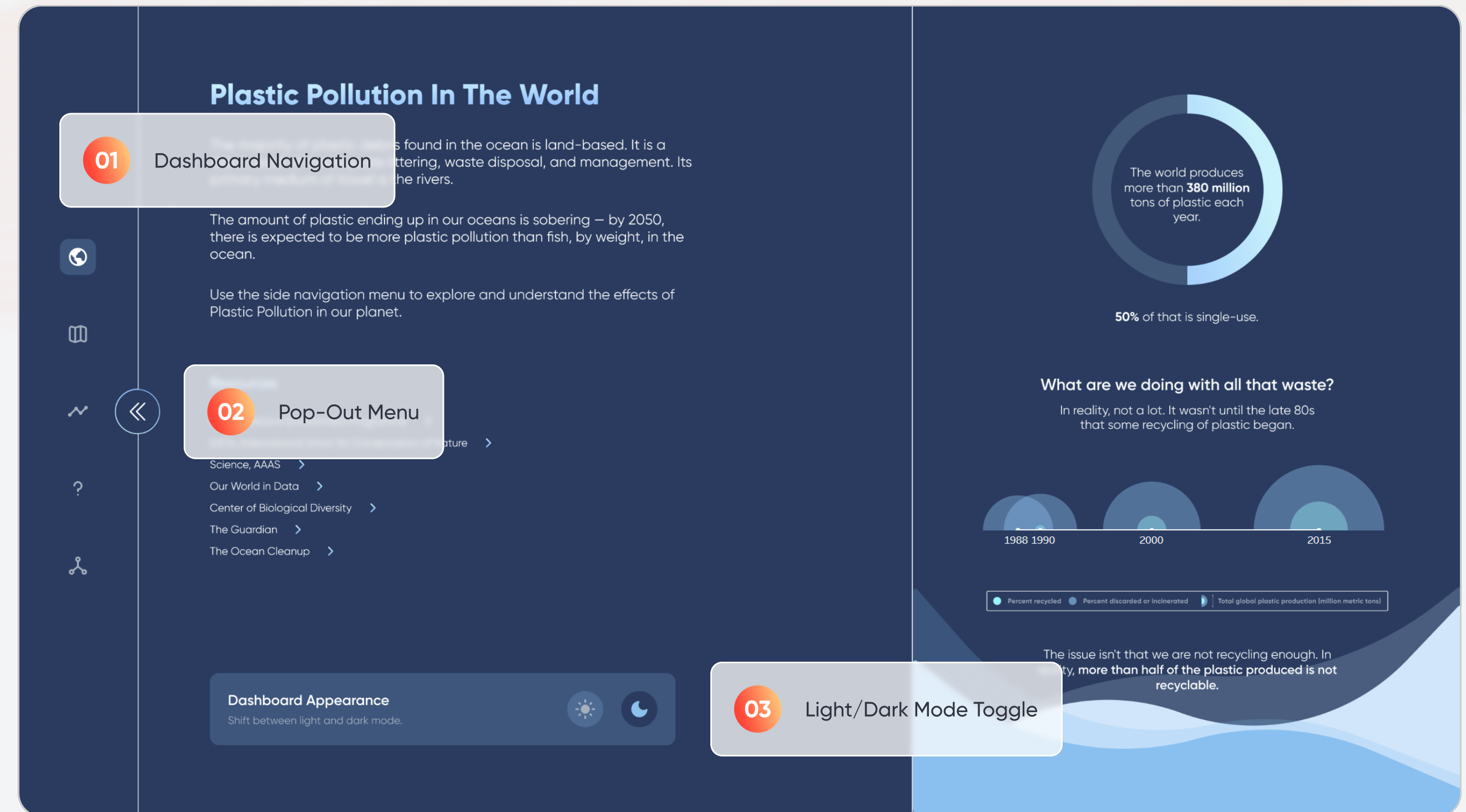
Allow the user to switch between a light and dark mode version of the dashboard.

[Read: How to make a Boolean toggle](#) >

[Read: How to Create Light Mode and Dark Mode Dashboards in Tableau](#) >

[Watch: How to make an integrated toggle switch](#) >

[Watch: Three ways to make terrific toggles](#) >





## View: The Problem With Plastic

### 01 Donut Chart



Read how to create effective, expanding donut charts in Tableau.

[Read: How to Make an Expanding Donut Chart in Tableau](#) >

### 02 Radial Bar Chart



Learn how to build a radial bar chart in Tableau.



Check back soon for this tutorial!

Our team is working hard to bring you more insights.

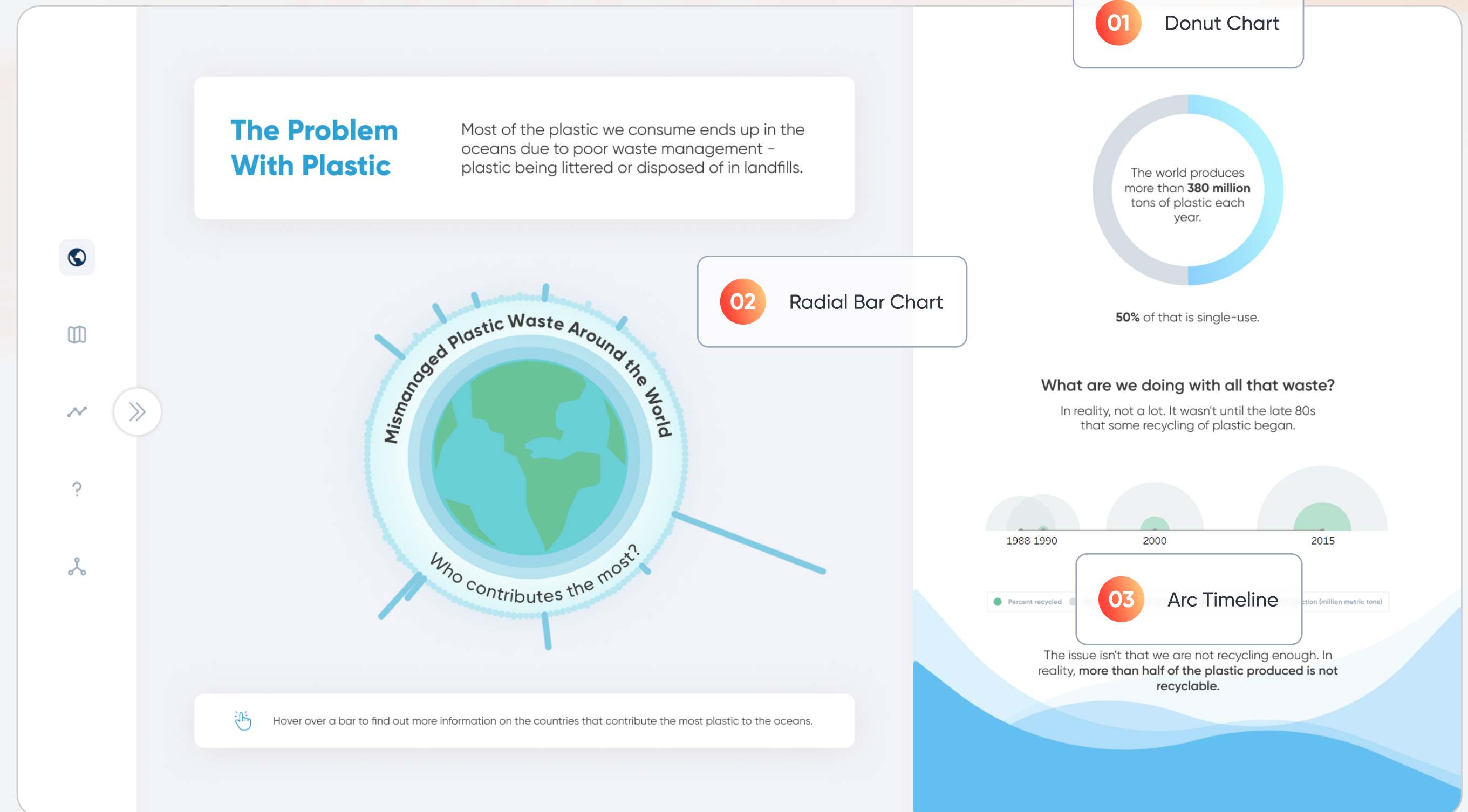
### 03 Arc Timeline



Explore how to build timelines in Tableau.

[Watch: How to Make a Timeline in Tableau](#) >

[Watch: Two Ways to Make a Tableau Timeline when Events Overlap](#) >



**Tip:** Incorporating static elements such as body copy, links, and color legends in the background images of your workbook can help with more efficient load times.



## View: Great Garbage Patches

### 01 River Mapping



Explore ways to incorporate rivers into a map using spatial data.

[Read: How to Use Spatial Data to Map Rivers and Roads in Tableau](#) >

[Watch: An Introduction to Mapping in Tableau](#) >

### 02 Dynamic Buffer



Learn how to map in Tableau by drawing a circle (called a buffer in Tableau) around the city of your choice.

[Watch: An Introduction to Mapping in Tableau](#) >

The screenshot shows a Tableau dashboard with two main views. The left view, titled "Great Garbage Patches", features a world map with blue lines representing rivers and blue circles of varying sizes indicating plastic input in tonnes. A legend below the map shows a scale from 5,000 to 500,000 tonnes. A text box explains that five gyres circle the oceans and trap plastic debris. The right view, titled "How Big Is The Great Pacific Garbage Patch?", shows a map of the Pacific Ocean with a large blue buffer around Orlando, Florida. A text box describes the size of the patch (1.6 million square kilometers) and the research methods used to study it. A "Select location" dropdown menu is visible below the text.



**Watch out!** Large geospatial files can slow down load times. Aim to filter your data to just the relevant data points where possible.



## View: Plastic Debris Decomposition Rate

### 01 Paginated, Interactive Timeline



Have a large range of time with limited space? Paginate your timeline!

[Watch: How to make a timeline](#) >

[Watch: How to do pagination](#) >

[Watch: How to make a timeline when events overlap](#) >

### 02 Clickable Icons

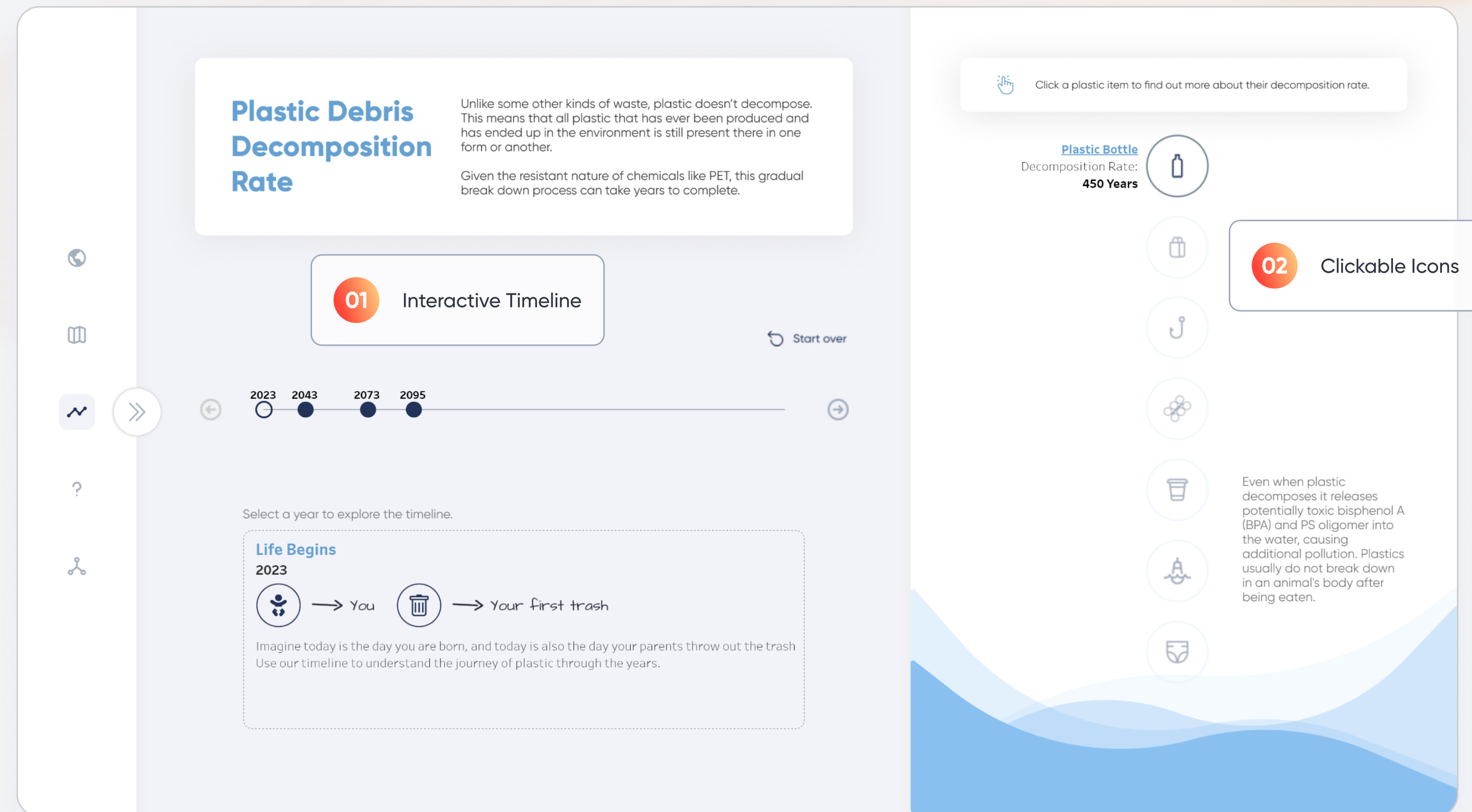


Incorporate clickable icons to reveal more information.

[Read: How to Do Button Swapping with Parameters in Tableau](#) >

[Watch: How to Add a Show/Hide Button to a Layout Container in Tableau](#) >

[Watch: How to Show Selections With Button Swapping in Tableau](#) >





## View: The Missing Plastic Problem, Part 1

### 01 Jitter Plot



Learn how to create a jitter plot in Tableau.

[Read: Why and How to Make Customizable Jitter Plots](#) >

[Watch: Why and How to Make Jitter Plots in Tableau](#) >

### 02 Image in Tooltip



Learn how to add images to tooltips.

[Read: How to Add an Image to a Tooltip in Tableau](#) >

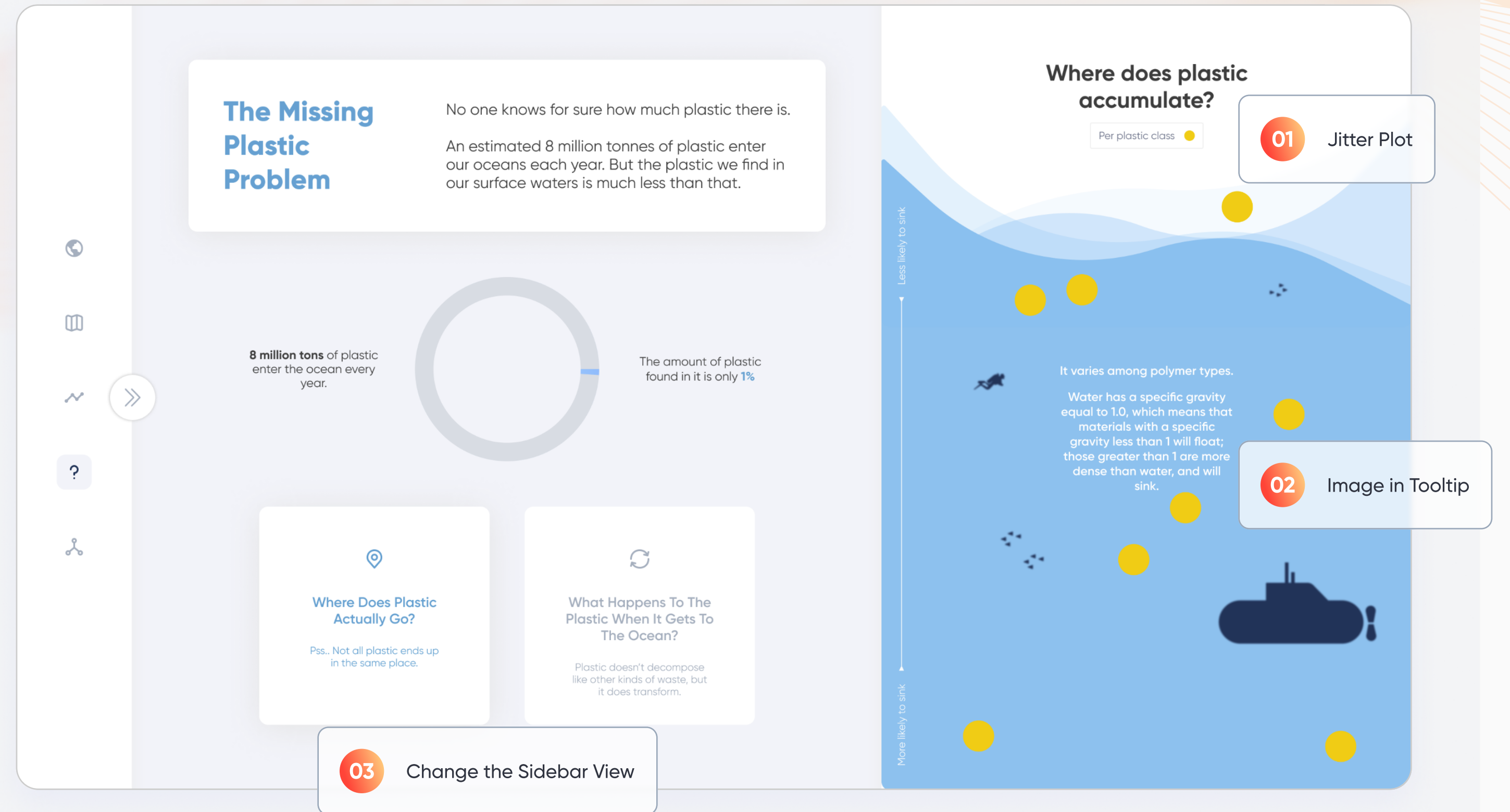
### 03 Change the Sidebar View



Learn how to swap out one portion of a dashboard for another.

[Watch: Three Ways to Add a Button to a Tableau Dashboard](#) >

[Watch: How to Make a Navigation Bar with Buttons in Tableau](#) >





## View: The Missing Plastic Problem, Part 2

### 01 Interactive Unit Charts

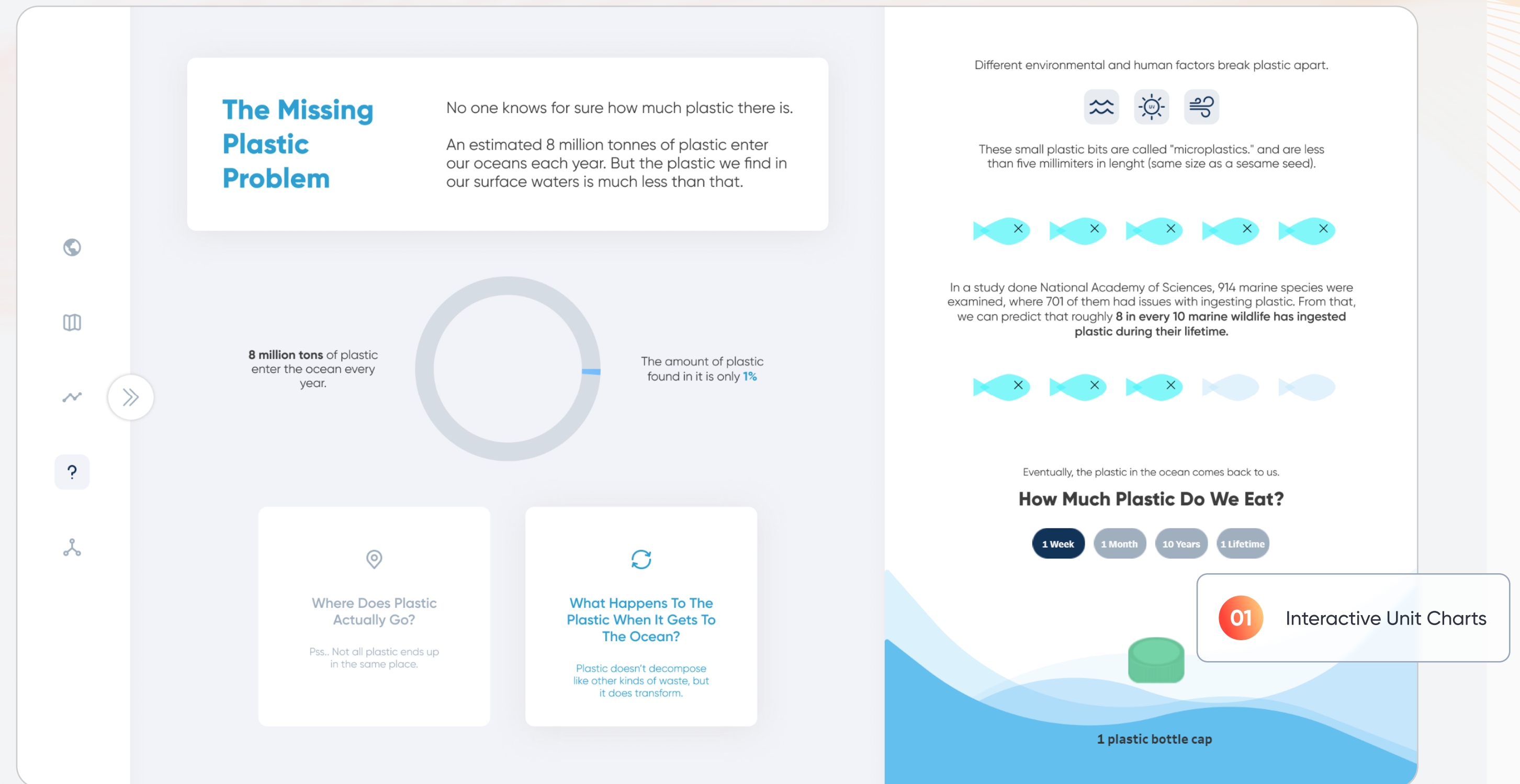


Master sheet swapping in Tableau, allowing users to choose how the data is displayed.

[Read: How to Do Better Sheet Swapping with Tableau's Dynamic Zone Visibility](#) >

[Read: Tableau Tip: How to Do Better Sheet Swapping](#) >

[Watch: How to do Sheet Swapping with Tableau Layout Containers](#) >



### 01 Interactive Unit Charts



## View: The Zero Waste Hierarchy

### 01 Clickable Bar Chart



Create a clickable bar chart that updates information across the dashboard.

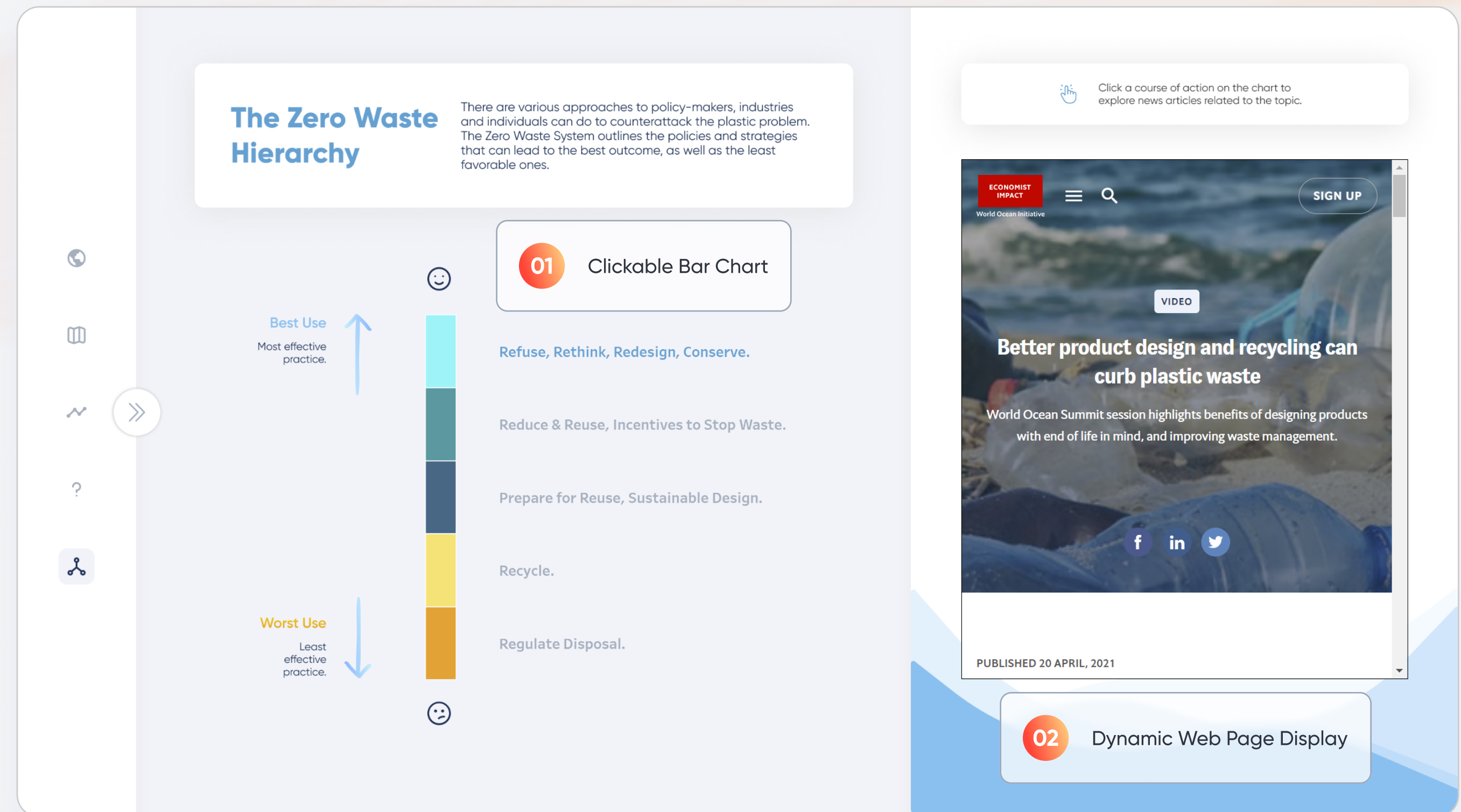
[Read: Three Ways to Make Beautiful Bar Charts in Tableau](#) >

### 02 Dynamic Web Page Display

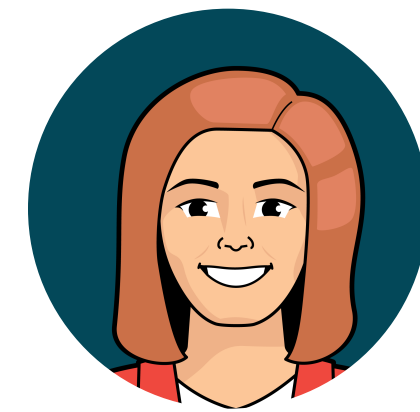


Dynamically display web pages depending on the zero waste category selected.

[Read: How to Use Dynamic URL Actions in Tableau](#) >



# Questions?

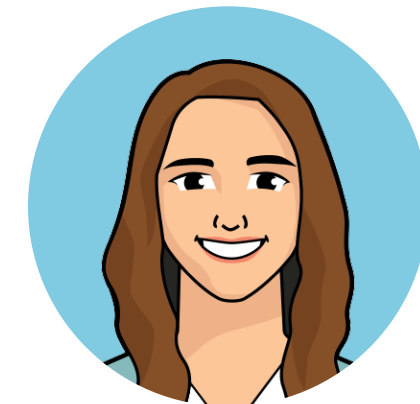


## **Amy Leonard**

Senior Director, Operations

✉ [amy@playfairdata.com](mailto:amy@playfairdata.com)

☎ (913) 237-0369



## **Alyssa Huff**

Senior Manager, Information Design

✉ [alyssa@playfairdata.com](mailto:alyssa@playfairdata.com)

☎ (913) 909-1677

